

EMUNIA  
*Beretti*  
ITALIAN EXCELLENCE SINCE 1873



CLASSIC SUPREME 132'  
CLASS D  
DISPLACEMENT HULL  
MEGAYACHT.



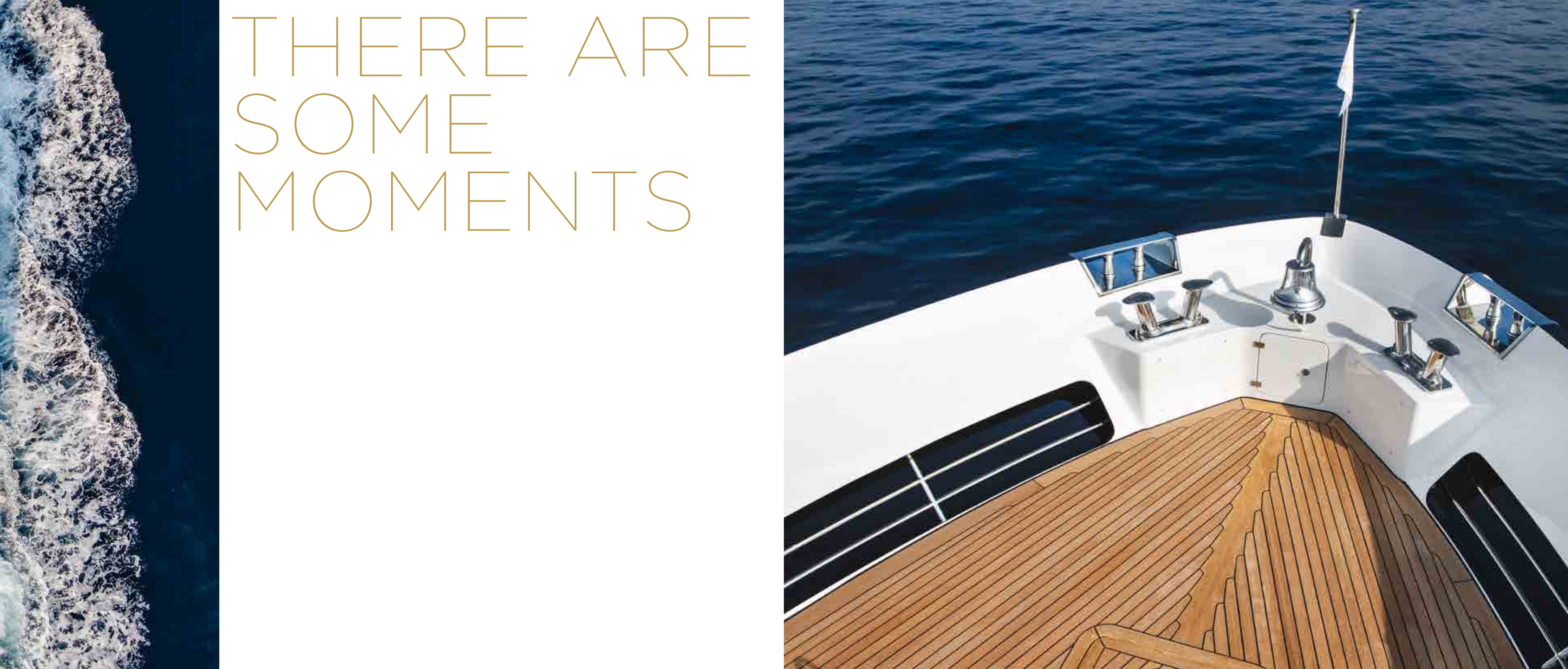








THERE ARE  
SOME  
MOMENTS







THAT  
CAN'T BE  
DESCRIBED  
IN  
WORDS,



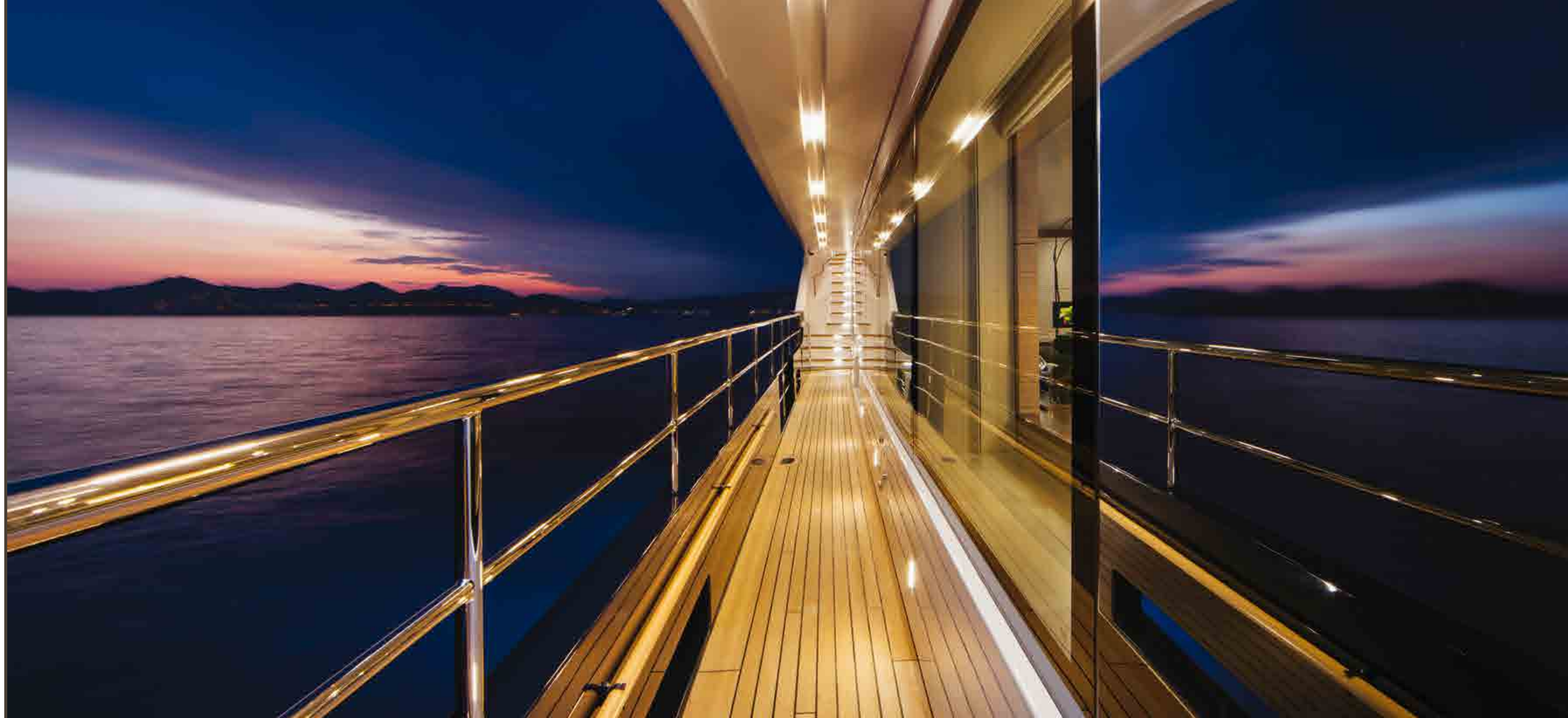


YOU HAVE TO  
EXPERIENCE  
THEM FOR  
YOURSELF.













HERE,

MAIN DECK





WHERE  
DESIGN AND  
INNOVATION  
BECOME ONE.

MAIN DECK





DISCOVER  
THE JOY



MAIN DECK SALOON



OF UNLIMITED



MAIN DECK SALOON

COMFORT.





MAIN DECK





MAIN DECK OWNER'S CABIN





MAIN DECK OWNER'S STUDY



MAIN DECK OWNER'S BATHROOM













UPPER DECK BOW AREA





UPPER DECK BOW AREA







AND THE  
CHANCE TO  
CUSTOMISE  
THEM

UPPER DECK





UPPER DECK DINING AREA



TO REFLECT  
YOUR  
PERSONALITY







DOWN TO  
THE SMALLEST  
DETAIL.

UPPER DECK SALOON







UPPER DECK VIP CABIN



UPPER DECK VIP BATHROOM





UPPER DECK WHEELHOUSE

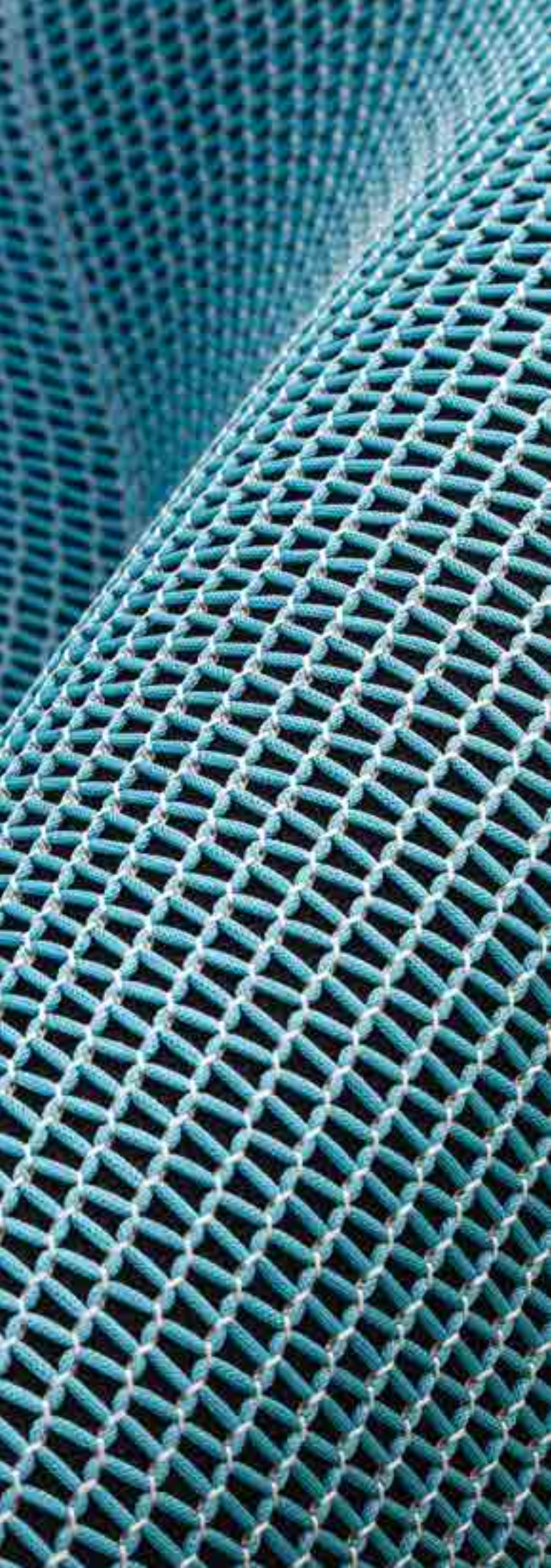












THE ONLY  
LIMIT



SUN DECK





SUN DECK DINING AREA

IS YOUR  
IMAGINATION.





SUN DECK









ACCEPT NO  
COMPROMISE,







LOWER DECK LOBBY



LOWER DECK TWIN CABIN





LOWER DECK GUESTS CABIN



LOWER DECK GUESTS BATHROOM





THIS IS  
EMUNA,

LOWER DECK BEACH AREA





LOWER DECK CREW CABIN



LOWER DECK CREW MESS



LOWER DECK CREW BATHROOM





LOWER DECK ENGINE ROOM





WHERE  
YOUR EVERY  
WISH IS A  
COMMAND.



# M/Y EMUNA | BS008

## GENERAL ARRANGEMENTS



SUN DECK



MAIN DECK



UPPER DECK



LOWER DECK



# M/Y EMUNA | BS008

## TECHNICAL SPECIFICATION



BUILDER	Azimut Benetti Spa, Benetti Shipyard Via M. Coppino, 104 Viareggio (Lucca) - Italy Phone +39 05843821 sales@benettiyachts.it - benettiyachts.it
EXTERIOR STYLING & CONCEPT	Stefano Righini
INTERIOR DESIGN	Benetti
INTERIOR DECORATOR	Paola Aboumrad
CONSTRUCTION MATERIAL	GRP
LENGTH OVERALL (LOA)	40.24 mt - 132'
MAXIMUM BEAM	8.18 mt - 26' 8"
MAXIMUM DRAFT	2.23 mt - 7' 6"
FULL LOAD DISPLACEMENT	275 tons
FUEL CAPACITY	45,000 l - 11,887 US gals
FRESH WATER CAPACITY	7,200 l - 1,902 US gals
MAIN ENGINES	2 x MTU 12V 2,000 M72, 1,080 kW @ 2,250 rpm
MAX SPEED AT HALF LOAD DISPLACEMENT	15,5 Knots
CRUISING SPEED AT 85% OF MAXIMUM POWER AT HALF LOAD	14,5 Knots
RANGE AT 11 KNOTS	3,400 Nautical Miles
GENERATORS	2 x 80 kW 400 V AC / 3 ph / 50 Hz
BOW THRUSTER	Electrical motor of 52 kW
STABILIZERS AT ANCHOR	Navigation Stab and Zero Speed at anchor Naiad Marine
PROPELLERS	2 x five nickel - aluminium - bronze blades and hub
ACCOMMODATION FOR GUESTS	10 Persons 5 Cabins
ACCOMMODATION FOR CREW	7 Persons 4 Cabins
CLASSIFICATION	RINA C ⚓ HULL • MACH Y, LY3 compliance (option)



# HISTORY

BENETTI IS ONE OF THE OLDEST BUILDERS OF LUXURY MOTOR YACHTS IN THE WORLD. ESTABLISHED BY LORENZO BENETTI IN 1873, THE COMPANY BEGAN LIFE BUILDING WOODEN BOATS USED FOR LOCAL AND INTERNATIONAL TRADE. AFTER THE DEATH OF LORENZO, HIS TWO SONS GINO AND EMILIO TOOK OVER THE MANAGEMENT OF THE SHIPYARD. THEY CHANGED ITS NAME TO FRATELLI BENETTI AND QUICKLY BUILT UP A REPUTATION THAT EXTENDED BEYOND THE MEDITERRANEAN.

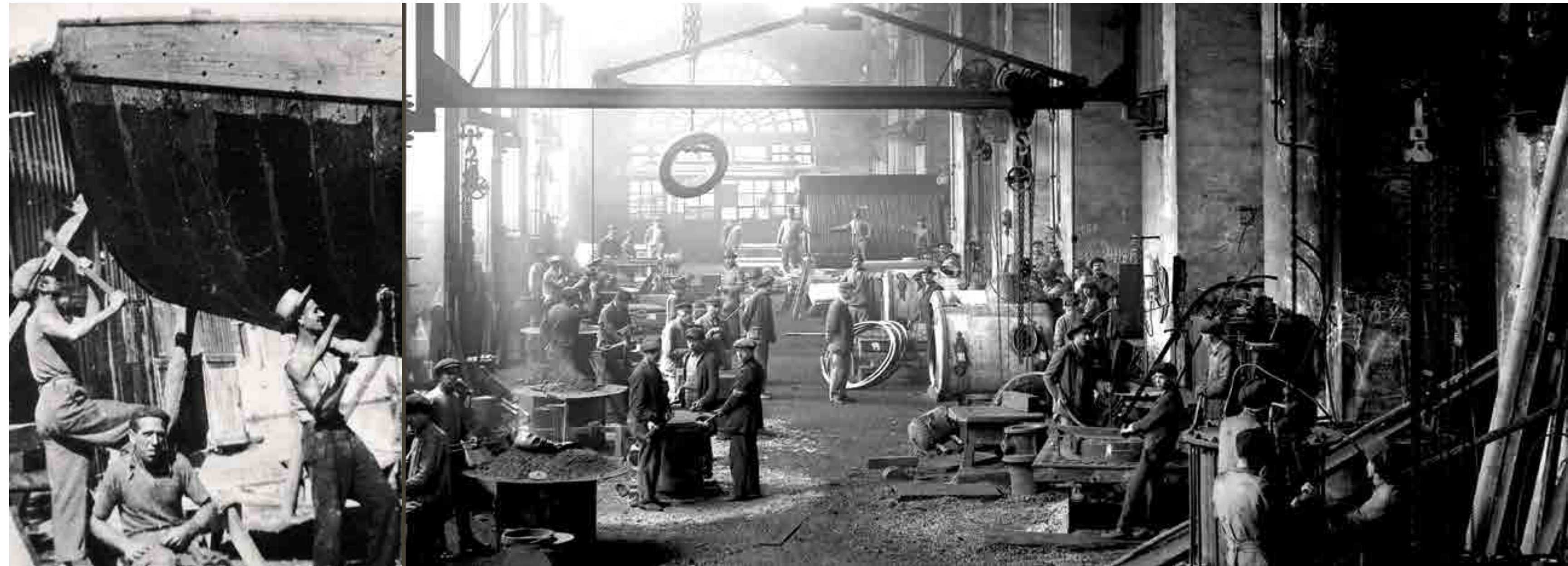
AFTER THE SECOND WORLD WAR, WITH THE DISAPPEARANCE OF COMMERCIAL SAILING VESSELS BUILT FROM WOOD, BENETTI CHANGED DIRECTION AND BEGAN PRODUCING PLEASURE CRAFT MADE FROM STEEL. THEN IN THE EARLY 1960S THE SHIPYARD PRODUCED ITS FIRST LUXURY MEGA YACHTS. SINCE 1980 THE FLEET HAS INCLUDED BIG MOTOR YACHTS IN THE 30 TO 60 METER RANGE AND BEYOND, NOT LEAST THE FAMOUS 86-METER 'NABILA'.

IN 1985 THE SHIPYARD WAS ACQUIRED BY THE CELEBRATED TURIN-BASED BOAT BUILDER AZIMUT SPA, WHICH BROUGHT IN NEW MANAGEMENT AND TRANSFORMED BENETTI INTO THE MODERN, TECHNOLOGICALLY ADVANCED REALITY WE KNOW TODAY: A FORWARD-LOOKING AND INNOVATIVE SHIPYARD, BUT ALSO ONE THAT PROUDLY RETAINS ITS TRADITIONAL VALUES OF EXPERIENCE, SKILL AND A PASSION FOR FINE CRAFTSMANSHIP.

AZIMUT BENETTI GROUP IS WHOLLY PRIVATELY OWNED, AS IT HAS BEEN FROM THE OUTSET.

THE GROUP'S FINANCIAL SOLIDITY AND INDEPENDENCE, BUILT OVER MORE THAN 40 YEARS IN BUSINESS, ARE KEY FACTORS IN ESTABLISHING CLOSE RELATIONSHIPS OF TRUST WITH CLIENTS.

TODAY AZIMUT BENETTI GROUP PROVIDES GUARANTEES OF STRENGTH AND STABILITY, BOTH PARTICULARLY IMPORTANT FACTORS FOR MEGA YACHT CLIENTS INVOLVED IN LONG TERM CONSTRUCTION PROJECTS.





# SHIPYARDS

## VIAREGGIO

BENETTI HAS HAD ITS HEADQUARTERS IN VIAREGGIO, IN VIA COPPINO, SINCE 1873. THE TWO PRODUCTION FACILITIES HERE, DARSENA LUCCA AND DARSENA ITALIA, ARE EQUIPPED TODAY WITH THE LATEST TECHNOLOGY FOR BUILDING CLASS RANGE YACHTS FROM 93 UP TO 145 FOOT. DARSENA ITALIA CAN PRODUCE FOUR 35-70 METER YACHTS CONCURRENTLY AND CAN ALSO BOAST A DRY DOCK AND A HELIPAD. DARSENA LUCCA CAN BUILD THREE YACHTS AT THE SAME TIME UP TO 42 METERS IN LENGTH. A THIRD, MORE RECENT, FACILITY INCREASES PRODUCTION CAPACITY BY SIX MORE YACHTS.

## LIVORNO

PURCHASED IN 2004, THE LIVORNO SHIPYARD COVERS A SURFACE AREA OF ABOUT 200,000 SQM. INHERITED FROM THE ILLUSTRIOUS CANTIERE ORLANDO, IT HAS BEEN CONVERTED BY BENETTI INTO A MODERN PRODUCTION FACILITY WHERE 12 CUSTOM STEEL AND ALUMINIUM MEGA YACHTS CAN BE BUILT AT THE SAME TIME. THE LIVORNO SHIPYARD ALSO OFFERS SUPER-YACHT REPAIR SERVICES, WITH A PRIVATE DOCK WHERE BOATS UP TO 80 METERS IN LENGTH CAN MOOR. AS THE MEDITERRANEAN'S LARGEST AND MOST UP-TO-DATE REFIT CENTRE, IT IS SET TO PLAY A KEY ROLE IN PLEASURE CRAFT DEVELOPMENT IN ITALY AND EUROPE AS A WHOLE.

## FANO

THE FANO SHIPYARD JOINED AZIMUT BENETTI GROUP IN JULY 2002 FOLLOWING THE MERGER WITH CANTIERI MOSCHINI, OF WHICH IT HAD BEEN THE MAJORITY SHAREHOLDER SINCE 1998. THE SITE IN ITALY'S LE MARCHE REGION IS TODAY REGARDED AS AN INTERNATIONAL CENTRE OF EXCELLENCE IN THE MOULDING AND LAMINATION OF YACHTS BUILT FROM COMPOSITE MATERIALS. THE 34,000 SQM PRODUCTION FACILITY, OF WHICH 12,000 SQM UNDER COVER, EMPLOYS A HIGHLY QUALIFIED WORKFORCE OF SPECIALISTS.







## HEADQUARTER VIAREGGIO

Italy

Via Michele Coppino, 104  
55049 - Viareggio (Lucca)

P: +39 0584 3821  
F: +39 0584 39623  
info@benettiyachts.it

## LIVORNO

Italy

Via Edda Fagni, 1  
57100 - Livorno

P: +39 0586 415600  
F: +39 0586 834053  
info@benettiyachts.it

## FT LAUDERDALE

USA

Benetti Americas  
1535 SE 17th Street - Suite B 101  
Ft Lauderdale, FL 33316, USA

P: +1 (954) 687 9436  
info@benettiamericas.com

## DUBAI

UAE

Jumeirah Business Center 2  
JLT, Dubai

M: +971 5555 24 852  
F: +971 4 439 0185  
nabil.eljammal@benettiyachts.it

## HONG KONG

Asia

Benetti Asia Ltd  
17/F China Building,  
29 Queen's Road Central,  
Central - Hong Kong

P: +852 3973 5996  
F: +852 3978 2300  
natalie.ye@benettihk.com



THIS BROCHURE SHALL NOT CONSTITUTE IN ANY CIRCUMSTANCE WHATSOEVER ANY OFFER BY THE SHIPYARD TO ANY PERSON OR BE INCORPORATED INTO ANY CONTRACT. ANY AND ALL INFORMATION CONTAINED IN THIS BROCHURE, INCLUDING WITHOUT LIMITATION ALL TECHNICAL DATA, PERFORMANCE, ILLUSTRATIONS AND DRAWINGS, ARE JUST A ROUGH GUIDE AND THEY ARE NOT CONTRACTUAL AND REFER TO STANDARD MODELS OF MOTOR YACHTS BUILT BY THE SHIPYARD AND HAVE BEEN UPDATED BY THE SHIPYARDS AS OF THE DATE OF ISSUE OF THE BROCHURE. THEREFORE THE ONLY INDICATIONS BINDING ON THE SELLER ARE CONTAINED SOLELY IN THE SALE AGREEMENT AND IN THE RELEVANT SPECIFIC MANUAL. THIS BROCHURE IS BASED ON INFORMATION AVAILABLE AT THE DATE OF ISSUE. NOTWITHSTANDING ALL EFFORTS TO ENSURE ACCURACY, THE INFORMATION CONTAINED IN THE BROCHURE MAY NOT COVER ALL DETAILS, TECHNICAL-COMMERCIAL CHANGES SUBSEQUENT TO THE DATE OF ISSUE, NOR ACCURATELY FORESEE OR REPORT ALL POSSIBLE SCENARIOS. DISPLAYS, PHOTOS, SCHEMES, DESIGNS OR EXAMPLES CONTAINED IN THIS BROCHURE ARE SOLELY AND EXCLUSIVELY REPRODUCED TO HIGHLIGHT THE INFORMATION CONTAINED. DUE TO THE DIFFERENT CHARACTERISTICS OF EACH YACHT, THE SHIPYARD DECLINES ANY AND ALL LIABILITY FOR ANY USE THEREOF ON THE BASIS OF THE INFORMATION CONTAINED IN THIS BROCHURE.

CREDITS | PHOTOGRAPHY: BENETTI SHIPYARD ARCHIVE AND PHOTOGRAPHER THIERRY AMELLER  
CONCEPT & DESIGN: DOLCI ADVERTISING

AZIMUT-BENETTI SPA VIA M. COPPINO, 104 - VIAREGGIO (LUCCA) ITALY - PHONE +39 05843821 SALES@BENETTIYACHTS.IT BENETTIYACHTS.IT

BENETTIYACHTS.IT

a brand of  
**AZIMUT** | **BENETTI**  
GROUP