

B16

Beretti
ITALIAN EXCELLENCE SINCE 1873

The background of the image is a light blue-grey gradient. On the left side, there is a large, dynamic spray of fine golden particles, resembling a fountain or a burst of light. In the center, a clear glass bottle is shown in a state of complete shattering. Several large, sharp fragments of the bottle are suspended in mid-air, while smaller pieces are scattered below. The bottle was filled with a thick, golden liquid, which is visible at the bottom of the main fragment and as a spray of particles. The overall composition is dramatic and celebratory.

Benetti Now

Discover Benetti Now.

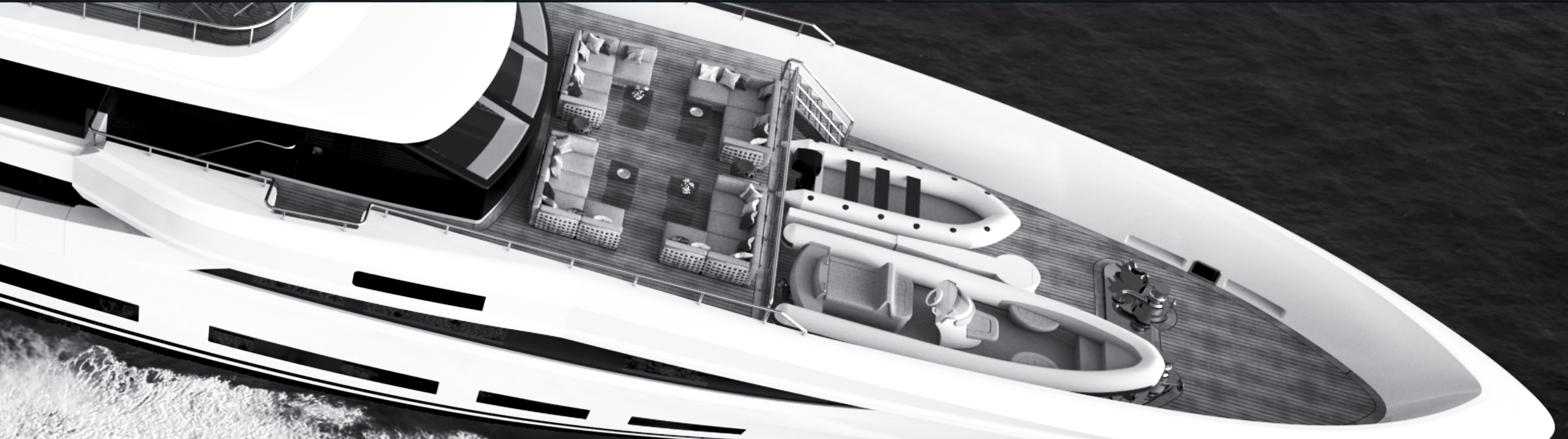


Discover a new
kind of cruising
perfection.





Excellence
can be tailored
to your desires.







B164

PORT OF
REGISTRY





Enjoy the balance
between space
and freedom.

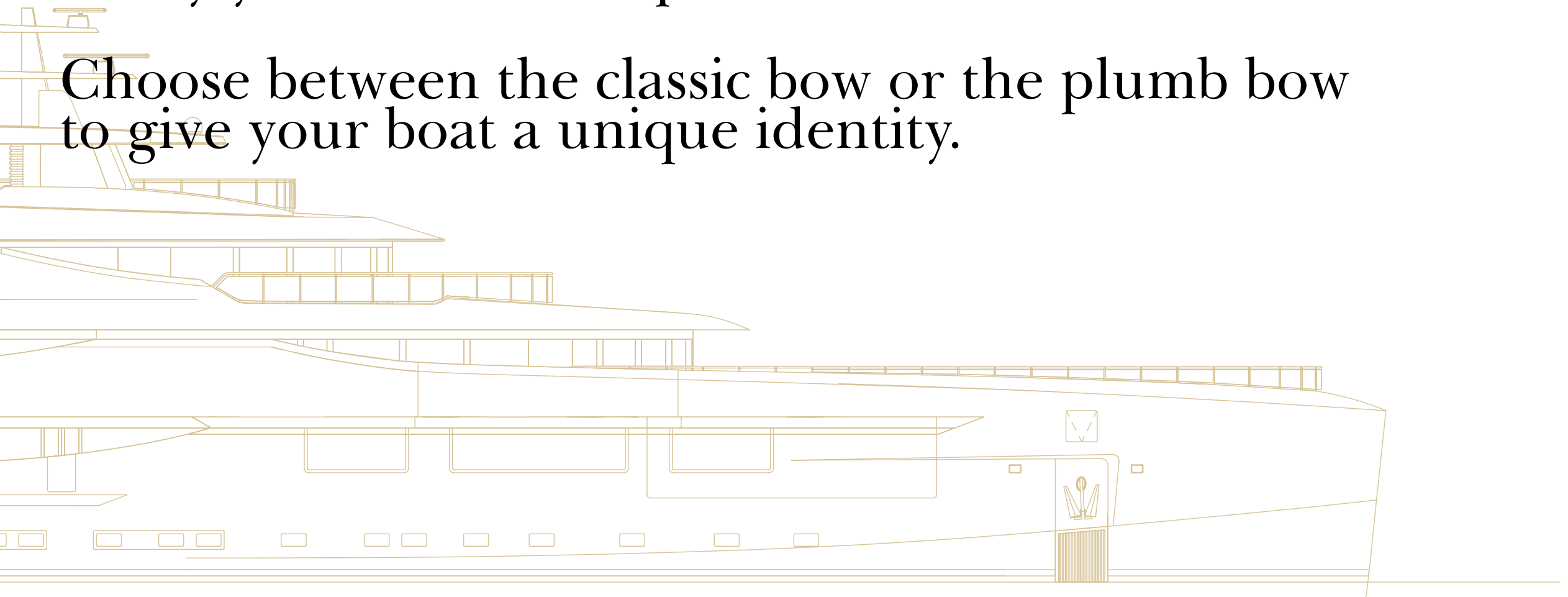


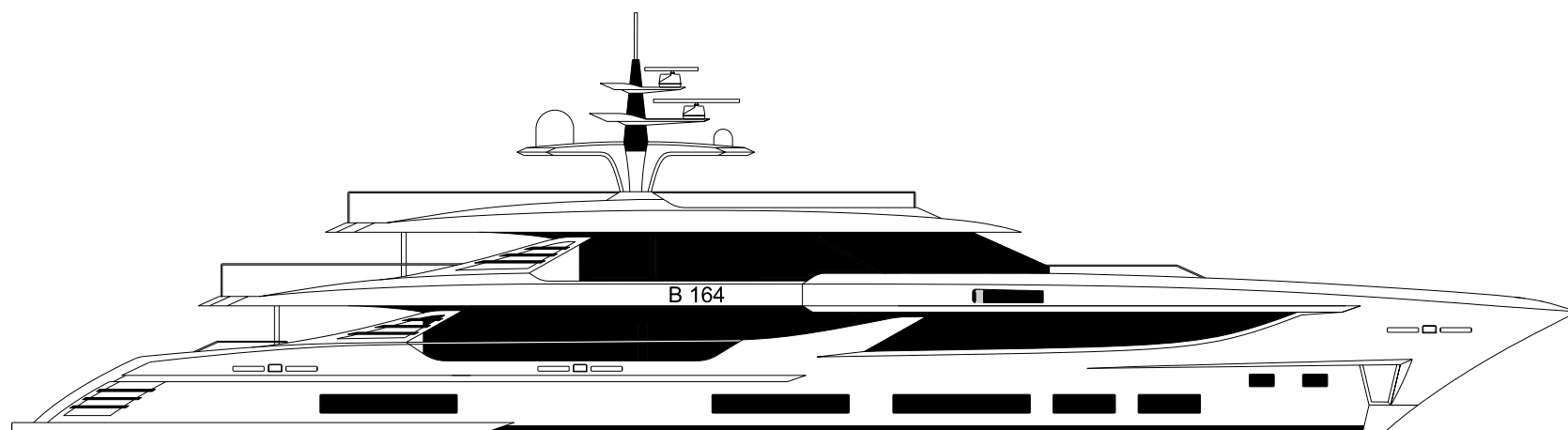
Discover Benetti Now. It's your time to choose.

Choose your ideal model from the four
that make up the Benetti Now fleet.

Choose the parallel middle body you prefer and
satisfy your desire for space on board.

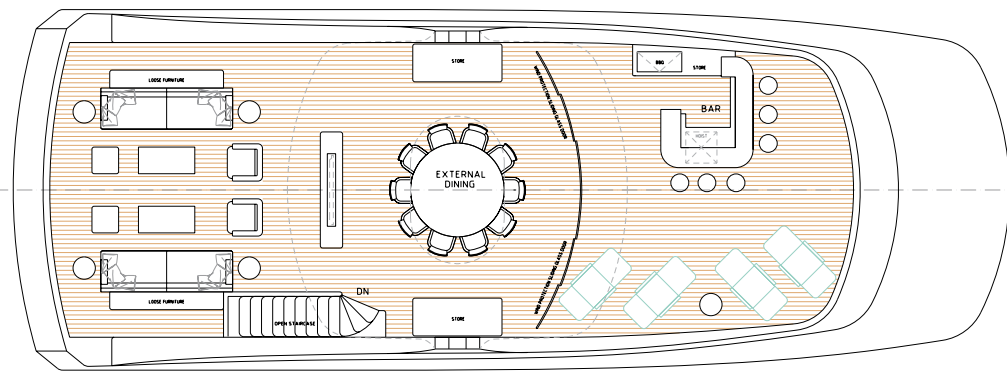
Choose between the classic bow or the plumb bow
to give your boat a unique identity.



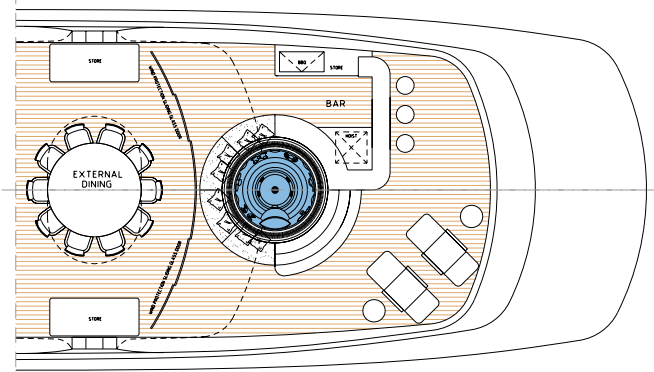


B164' | 50 MT

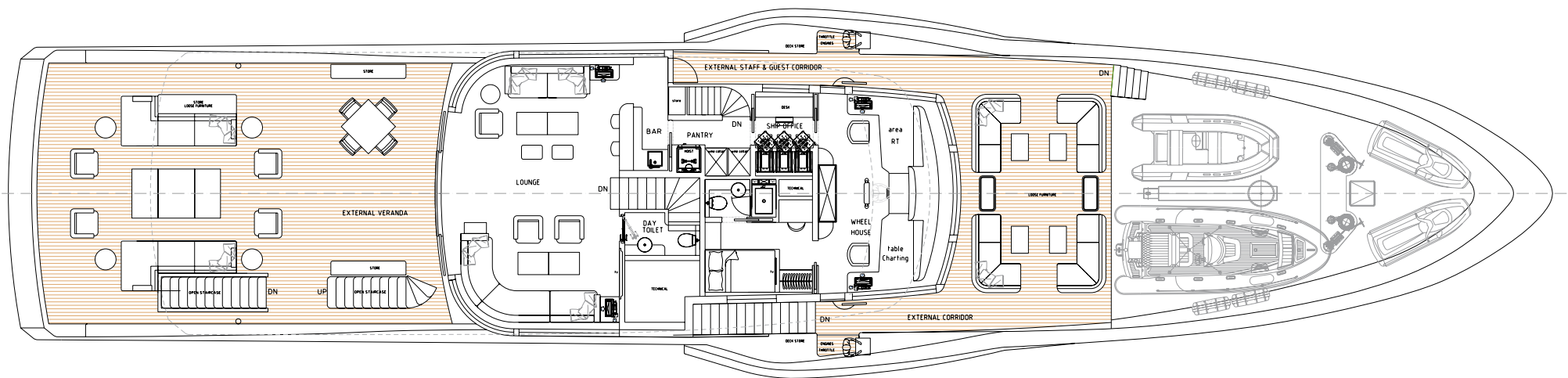
B164'



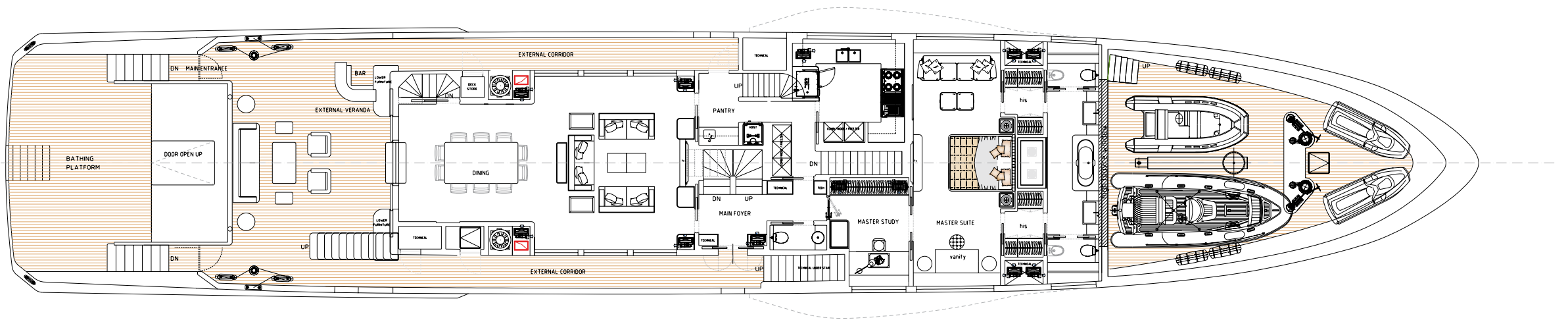
SUN DECK



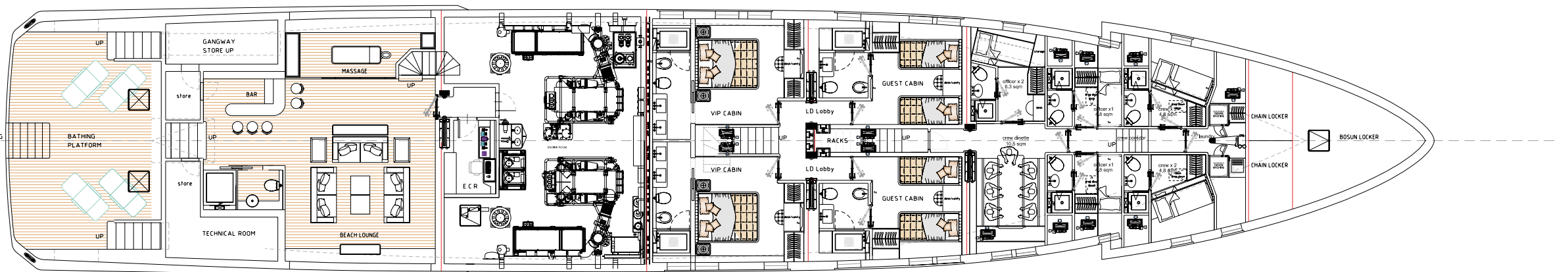
ALTERNATIVE SUN DECK



UPPER DECK



MAIN DECK



LOWER DECK



CONSTRUCTION MATERIAL	Steel and Aluminum Alloy
LENGTH OVERALL (LOA)	50 mt - 164'
MAXIMUM BEAM (BOA)	9.3 mt - 30.5'
MAXIMUM DRAFT	2.45 mt - 8'
FUEL CAPACITY	60,000 l - 15,850 US gals
FRESH WATER CAPACITY	8,000 l - 2,110 US gals
MAIN ENGINES	2 x 1,081 kW (1,450 HP)/each
MAX SPEED	14.5 Knots
SPEED AT 85% MCR	13.5 Knots
RANGE AT 10 Knots	4,000 Nautical Miles
GENERATORS	2 x 125 kW 400V AC / 3ph+N / 50Hz
ACCOMMODATION FOR OWNER&GUESTS	10 Persons in 5 cabins
ACCOMMODATION FOR CREW	9 Persons in 6 cabins
CLASSIFICATION	RINA rules for classification of pleasure yachts C * HULL • MACH Y LY3 Commercial Compliance

THIS BROCHURE SHALL NOT CONSTITUTE IN ANY CIRCUMSTANCE WHATSOEVER ANY OFFER BY THE SHIPYARD TO ANY PERSON OR BE INCORPORATED INTO ANY CONTRACT. ANY AND ALL INFORMATION CONTAINED IN THIS BROCHURE, INCLUDING WITHOUT LIMITATION ALL TECHNICAL DATA, PERFORMANCE, ILLUSTRATIONS AND DRAWINGS, ARE JUST A ROUGH GUIDE AND THEY ARE NOT CONTRACTUAL AND REFER TO STANDARD MODELS OF MOTOR YACHTS BUILT BY THE SHIPYARD AND HAVE BEEN UPDATED BY THE SHIPYARDS AS OF THE DATE OF ISSUE OF THE BROCHURE. THEREFORE THE ONLY INDICATIONS BINDING ON THE SELLER ARE CONTAINED SOLELY IN THE SALE AGREEMENT AND IN THE RELEVANT SPECIFIC MANUAL. THIS BROCHURE IS BASED ON INFORMATION AVAILABLE AT THE DATE OF ISSUE. NOTWITHSTANDING ALL EFFORTS TO ENSURE ACCURACY, THE INFORMATION CONTAINED IN THE BROCHURE MAY NOT COVER ALL DETAILS, TECHNICAL-COMMERCIAL CHANGES SUBSEQUENT TO THE DATE OF ISSUE, NOR ACCURATELY FORESEE OR REPORT ALL POSSIBLE SCENARIOS. DISPLAYS, PHOTOS, SCHEMES, DESIGNS OR EXAMPLES CONTAINED IN THIS BROCHURE ARE SOLELY AND EXCLUSIVELY REPRODUCED TO HIGHLIGHT THE INFORMATION CONTAINED. DUE TO THE DIFFERENT CHARACTERISTICS OF EACH YACHT, THE SHIPYARD DECLINES ANY AND ALL LIABILITY FOR ANY USE THEREOF ON THE BASIS OF THE INFORMATION CONTAINED IN THIS BROCHURE.

CREDITS RENDERING: LUCA CATINO

CONCEPT & DESIGN: DOLCI ADVERTISING

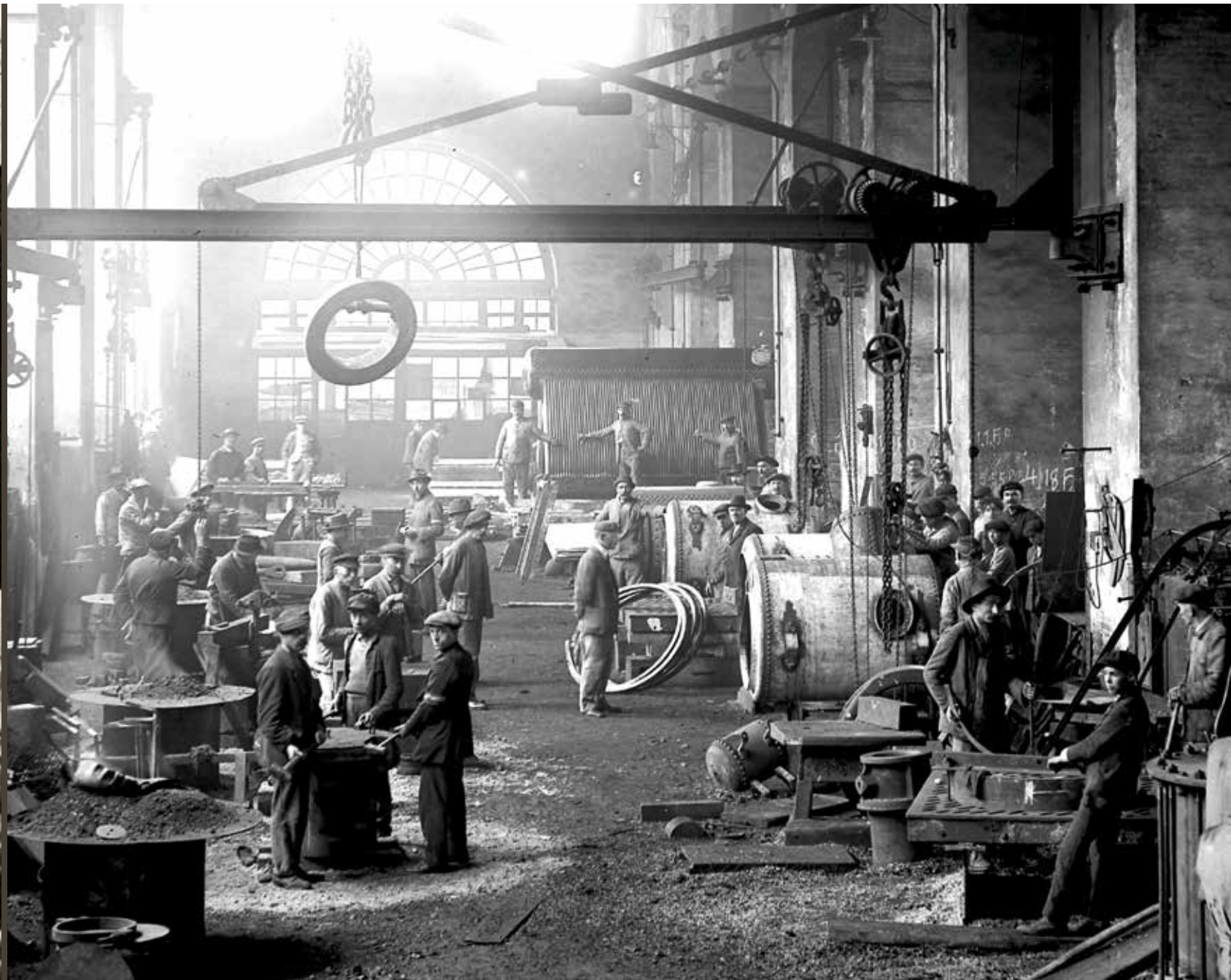
AZIMUT-BENETTI SPA VIA M. COPPINO, 104 - VIAREGGIO (LUCCA) ITALY - PHONE +39 05843821 SALES@BENETTIYACHTS.IT BENETTIYACHTS.IT

BENETTI IS ONE OF THE OLDEST BUILDERS OF LUXURY MOTOR YACHTS IN THE WORLD. ESTABLISHED BY LORENZO BENETTI IN 1873, THE COMPANY BEGAN LIFE BUILDING WOODEN BOATS USED FOR LOCAL AND INTERNATIONAL TRADE. AFTER THE DEATH OF LORENZO, HIS TWO SONS GINO AND EMILIO TOOK OVER THE MANAGEMENT OF THE SHIPYARD. THEY CHANGED ITS NAME TO FRATELLI BENETTI AND QUICKLY BUILT UP A REPUTATION THAT EXTENDED BEYOND THE MEDITERRANEAN. AFTER THE SECOND WORLD WAR, WITH THE DISAPPEARANCE OF COMMERCIAL SAILING VESSELS BUILT FROM WOOD, BENETTI CHANGED DIRECTION AND BEGAN PRODUCING PLEASURE CRAFT MADE FROM STEEL. THEN IN THE EARLY 1960S THE SHIPYARD PRODUCED ITS FIRST LUXURY MEGA YACHTS. SINCE 1980 THE FLEET HAS INCLUDED BIG MOTOR YACHTS IN THE 30 TO 60 METER RANGE AND BEYOND, NOT LEAST THE FAMOUS 86-METER 'NABILA'.

IN 1985 THE SHIPYARD WAS ACQUIRED BY THE CELEBRATED TURIN-BASED BOAT BUILDER AZIMUT SPA, WHICH BROUGHT IN NEW MANAGEMENT AND TRANSFORMED BENETTI INTO THE MODERN, TECHNOLOGICALLY ADVANCED REALITY WE KNOW TODAY: A FORWARD-LOOKING AND INNOVATIVE SHIPYARD, BUT ALSO ONE THAT PROUDLY RETAINS ITS TRADITIONAL VALUES OF EXPERIENCE, SKILL AND A PASSION FOR FINE CRAFTSMANSHIP.

AZIMUT BENETTI GROUP IS WHOLLY PRIVATELY OWNED, AS IT HAS BEEN FROM THE OUTSET. THE GROUP'S FINANCIAL SOLIDITY AND INDEPENDENCE, BUILT OVER MORE THAN 40 YEARS IN BUSINESS, ARE KEY FACTORS IN ESTABLISHING CLOSE RELATIONSHIPS OF TRUST WITH CLIENTS. TODAY AZIMUT BENETTI GROUP PROVIDES GUARANTEES OF STRENGTH AND STABILITY, BOTH PARTICULARLY IMPORTANT FACTORS FOR MEGA YACHT CLIENTS INVOLVED IN LONG TERM CONSTRUCTION PROJECTS.

HISTORY



VIAREGGIO

BENETTI HAS HAD ITS HEADQUARTERS IN VIAREGGIO, IN VIA COPPINO, SINCE 1873. THE TWO PRODUCTION FACILITIES HERE, DARSENA LUCCA AND DARSENA ITALIA, ARE EQUIPPED TODAY WITH THE LATEST TECHNOLOGY FOR BUILDING CLASS RANGE YACHTS FROM 93 UP TO 145 FOOT. DARSENA ITALIA CAN PRODUCE FOUR 35-70 METER YACHTS CONCURRENTLY AND CAN ALSO BOAST A DRY DOCK AND A HELIPAD. DARSENA LUCCA CAN BUILD THREE YACHTS AT THE SAME TIME UP TO 42 METERS IN LENGTH. A THIRD, MORE RECENT, FACILITY INCREASES PRODUCTION CAPACITY BY SIX MORE YACHTS.

LIVORNO

PURCHASED IN 2004, THE LIVORNO SHIPYARD COVERS A SURFACE AREA OF ABOUT 200,000 SQM. INHERITED FROM THE ILLUSTRIOUS CANTIERE ORLANDO, IT HAS BEEN CONVERTED BY BENETTI INTO A MODERN PRODUCTION FACILITY WHERE 12 CUSTOM STEEL AND ALUMINIUM MEGA YACHTS CAN BE BUILT AT THE SAME TIME. THE LIVORNO SHIPYARD ALSO OFFERS SUPER-YACHT REPAIR SERVICES, WITH A PRIVATE DOCK WHERE BOATS UP TO 80 METERS IN LENGTH CAN MOOR. AS THE MEDITERRANEAN'S LARGEST AND MOST UP-TO-DATE REFIT CENTRE, IT IS SET TO PLAY A KEY ROLE IN PLEASURE CRAFT DEVELOPMENT IN ITALY AND EUROPE AS A WHOLE.

FANO

THE FANO SHIPYARD JOINED AZIMUT BENETTI GROUP IN JULY 2002 FOLLOWING THE MERGER WITH CANTIERI MOSCHINI, OF WHICH IT HAD BEEN THE MAJORITY SHAREHOLDER SINCE 1998. THE SITE IN ITALY'S LE MARCHE REGION IS TODAY REGARDED AS AN INTERNATIONAL CENTRE OF EXCELLENCE IN THE MOULDING AND LAMINATION OF YACHTS BUILT FROM COMPOSITE MATERIALS. THE 34,000 SQM PRODUCTION FACILITY, OF WHICH 12,000 SQM UNDER COVER, EMPLOYS A HIGHLY QUALIFIED WORKFORCE OF SPECIALISTS.

SHIPYARDS





HEADQUARTER VIAREGGIO

Italy

Via Michele Coppino, 104
55049 - Viareggio (Lucca)

P: +39 0584 3821
F: +39 0584 39623
info@benettiyachts.it

LIVORNO

Italy

Via Edda Fagni, 1
57100 - Livorno

P: +39 0586 415600
F: +39 0586 834053
info@benettiyachts.it

FT LAUDERDALE

USA

Benetti Americas
1535 SE 17th Street - Suite B 101
Ft Lauderdale, FL 33316, USA

P: +1 (954) 687 9436
info@benettiamericas.com

DUBAI

UAE

Jumeirah Business Center 2
JLT, Dubai

M: +971 5555 24 852
F: +971 4 439 0185
nabil.eljammal@benettiyachts.it

HONG KONG

Asia

Benetti Asia Ltd
17/F, China Building,
29 Queen's Road Central,
Central, Hongkong

P: +852 3973 5996
F: +852 3978 2300
natalie.ye@benettihk.com

BENETTIYACHTS.IT

A brand of AZIMUT | BENETTI Group